

CARLOW CONCRETE TANKS

DRAWING TITLE:
 FULL RETENTION RANGE
 CP6FR 1000 GALLON (4.5m³)
 KOA 10 FILTER
 GENERAL LAYOUT

Drawn By: T. Armstrong

Date: 01/12/08

Revision: A (11/12/09)

UNIT REF CODE	MAX FLOW RATE (l/s)	DRAINAGE AREA (m ²)	NOMINAL OIL STORAGE (L)	SILT STORAGE CAPACITY (L)	INLET INVERT TO BASE (mm)	STANDARD PIPE SIZE O.D. (mm)
CP6FR	6.0	330	60	600	1,445	160 Dia

STANDARD UNIT WEIGHTS:

- TANK:	2.5 tonnes
- COVER SLAB:	1.4 tonnes

STANDARD DESIGN LOADS:

LID:

IMPOSED LOAD: 10 kN/m² UDL OR 5,850 kg WHEEL LOAD
 DEAD LOAD: UP TO 1m OVERBURDEN

HEAVY DUTY OR CUSTOM LIDS CAN BE MANUFACTURED FOR MORE ONEROUS APPLICATIONS.

TANK:

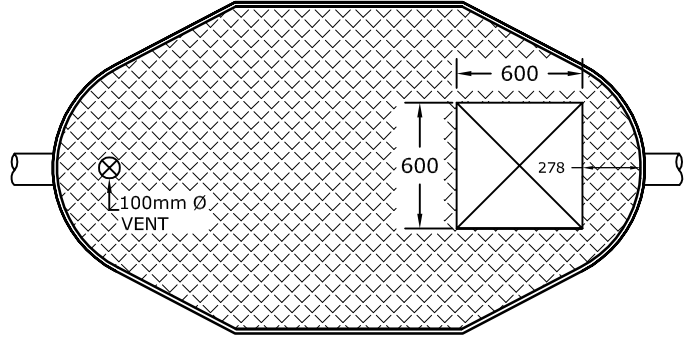
IMPOSED SURCHARGE: 10 kN/m² UDL (HA LOADING EQUIVALENT TO BS 5400-2)

NOTE: VERY LARGE POINT LOADS SUCH AS THOSE FROM CRANE OUTRIGGERS SHOULD BE AVOIDED IN THE IMMEDIATE VICINITY OF THE TANK

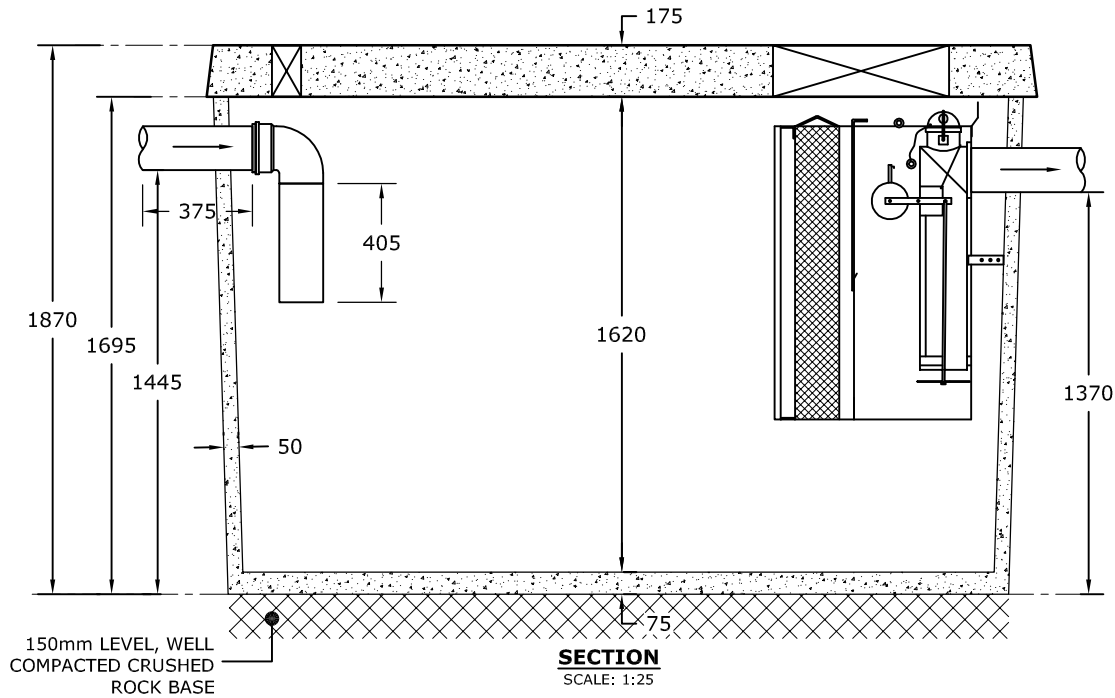
STANDARD ACCESS OPENING SIZE:

- 600mm x 600mm

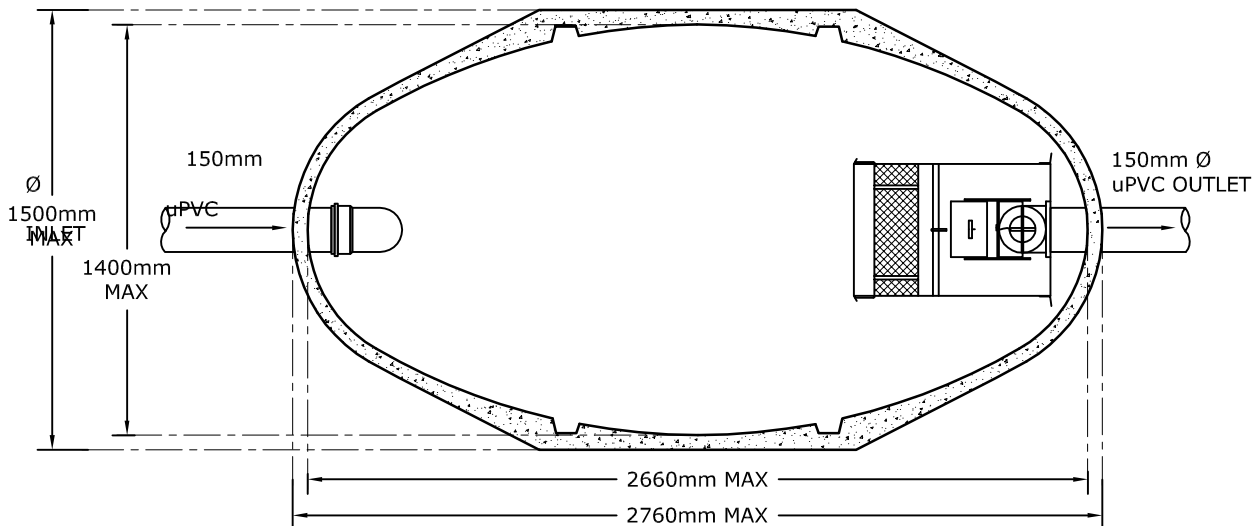
NON STANDARD SIZES ARE AVAILABLE ON REQUEST



ROOF PLAN:
SCALE: 1:35



SECTION
SCALE: 1:25



PLAN VIEW:
SCALE: 1:25